

ROBERTO BECCACECI

CANTICO

Madrigale spirituale

per una voce di baritono e alcuni strumenti,
su testo tratto dalla raccolta *"Immutabili stelle"* di
Mario Pincherle

percussione I: celesta / (campane)

RIPARTIZIONE STRUMENTI A PERCUSSIONE FRA GLI ESECUTORI

- I Es.: Celesta
(anche Campane, da ms. 68 a ms. 97);
- II Es.: Vibrafono,
Campane,
Gongs,
Tam-tam;
- III Es.: Crotalo,
Glockenspiel,
Marimba
(anche Vibrafono, da ms. 138 al termine).


ELENCO BATTENTI






- | | |
|--|----------------|
| - I Es.: martelli di metallo | per Cmp.ne. |
| - II Es.: martelletto ricoperto di cuoio | } |
| martello grosso di legno | per Cmp.ne; |
| mazzuola di feltro | per Gongs; |
| mazzuola morbida | per Mar.; |
| mazzuole di corda dura | } |
| " " " media | per Vibr.; |
| " " " morbida | } |
| " " filo morbido | per Tam-t.. |
| " " plastica | } |
| mazzuola di feltro leggera | per Tam-t.. |
| " " " pesante | } |
| - III Es.: mazzuole di metallo | per Glocksp.; |
| mazzuole di corda dura | } |
| " " gomma dura | per Mar.; |
| " grosse di materiale morbido | } |
| mazzuole di corda media | per Vibr.; |
| " " " morbida | } |
| bacchetta di metallo | per Triangolo. |



ABBREVIAZIONI E SEGNI CONVENZIONALI


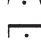

- **s. att.** : senza far sentire l'attacco;
- **l.v.** : lasciar vibrare;
- **sm.to** : smorzato;

- **pont.** : sul ponticello, **[↑]pont.** : vicino al ponticello;
- **tast.** : sulla tastiera, **[↑]tast.** : vicino alla tastiera;
- **SORD.** : con sordina, **~~SORD.~~** : senza sordina;

-  : senza vibrare.

- * : **recitato ritmico:** il timbro - più chiaro o più scuro - è proporzionale alla posizione dei segni nel pentagramma privo della chiave;
- * : **declamato ritmico:** l'ampiezza dell'inflessione è regolata - approssimativamente - dalle altezze indicate;
-  : **mezzo-cantato** (sprechgesang);
-  : flatterzunge (fltz.);
-  : slap tongue all'altezza indicata (slpt.);
-  : pizzicato "strappato";
-  : lasciar vibrare fino a completa estinzione del suono;

-  : accentato, come un tempo forte,
-  : disaccentato, come un tempo debole;

-  : corona breve,
-  : corona normale,
-  : corona lunga;

AVVERTENZE

- Secondo la consuetudine, i segni di alterazione hanno valore esclusivamente nella sola misura in cui si trovano.

"CANTICO"

Madrigale spirituale per una voce di Baritono e alcuni strumenti
su testo tratto dalla raccolta: "Immutabili stelle", di Mario Pincherle.

R. BECCACECI
(1991-1992)

Largo estatico; contemplativo (♩ - Tempo 1)

Celesta

ppp sempre
assoluta

mente uniforme e privo di accenti --- *(Ped. sempre)*

Handwritten musical score system 1. It consists of two staves (treble and bass clef) in 5/4 time. The first staff has a melodic line with a fermata over the first measure, followed by a series of eighth and sixteenth notes. The second staff has a similar melodic line. The system ends with a double bar line and a repeat sign. The number 25 is written above the first staff.

rit. ----- *a tempo*

Handwritten musical score system 2. It consists of two staves (treble and bass clef) in 3/2 time. The first staff has a melodic line with a fermata over the first measure, followed by a series of eighth and sixteenth notes. The second staff has a similar melodic line. The system ends with a double bar line and a repeat sign.

Handwritten musical score system 3. It consists of two staves (treble and bass clef) in 3/2 time. The first staff has a melodic line with a fermata over the first measure, followed by a series of eighth and sixteenth notes. The second staff has a similar melodic line. The system ends with a double bar line and a repeat sign. The number 30 is written above the first staff.

Handwritten musical score system 4. It consists of two staves (treble and bass clef) in 3/2 time. The first staff has a melodic line with a fermata over the first measure, followed by a series of eighth and sixteenth notes. The second staff has a similar melodic line. The system ends with a double bar line and a repeat sign. The number 35 is written above the first staff, and the number 40 is written above the second staff. The number 6 is written below both staves.

Molto moderato; quasi adagio (♩)

Handwritten musical score system 5. It consists of two staves (treble and bass clef) in 2/2 time. The first staff has a melodic line with a fermata over the first measure, followed by a series of eighth and sixteenth notes. The second staff has a similar melodic line. The system ends with a double bar line and a repeat sign. The number 35 is written above the first staff, and the number 40 is written above the second staff. The number 6 is written below both staves. The text *(sempre molto intenso)* is written below the first staff.

Handwritten musical score system 6. It consists of two staves (treble and bass clef) in 2/2 time. The first staff has a melodic line with a fermata over the first measure, followed by a series of eighth and sixteenth notes. The second staff has a similar melodic line. The system ends with a double bar line and a repeat sign. The number 45 is written above the first staff, and the number 50 is written above the second staff. The text *(sm.to)* is written above the first staff.

Handwritten musical score system 7. It consists of two staves (treble and bass clef) in 2/2 time. The first staff has a melodic line with a fermata over the first measure, followed by a series of eighth and sixteenth notes. The second staff has a similar melodic line. The system ends with a double bar line and a repeat sign. The number 50 is written above the first staff, and the number 55 is written above the second staff. The text *(sm.to)* is written above the first staff.

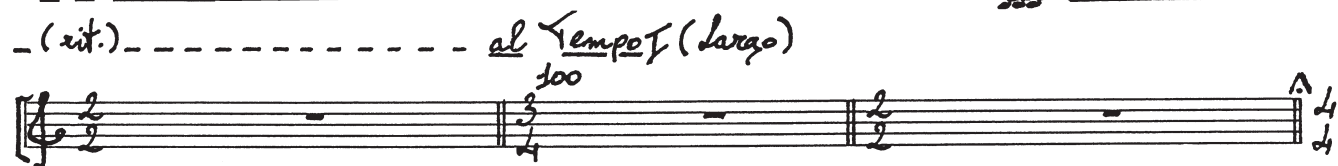
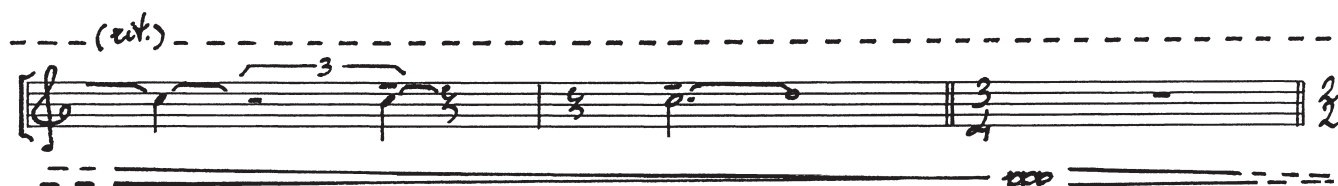
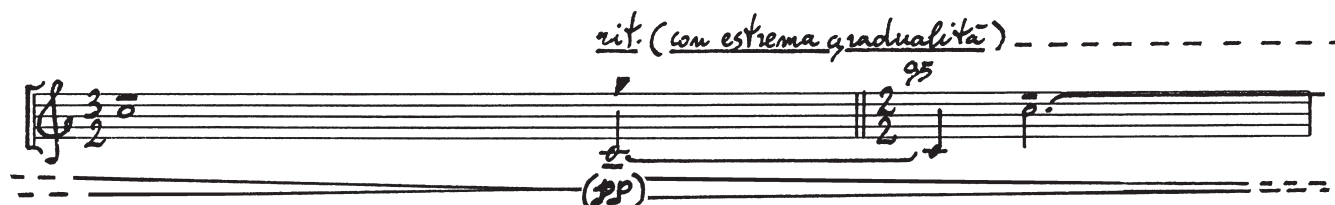
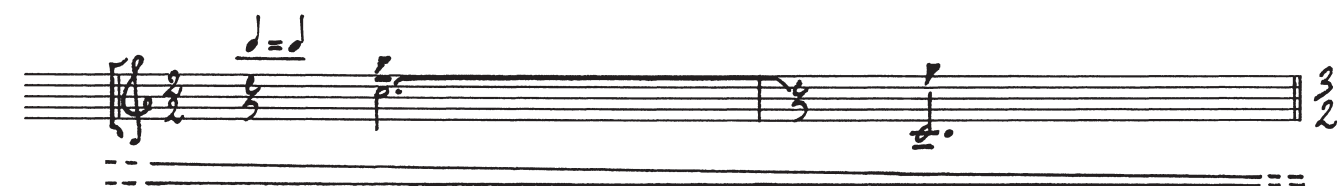
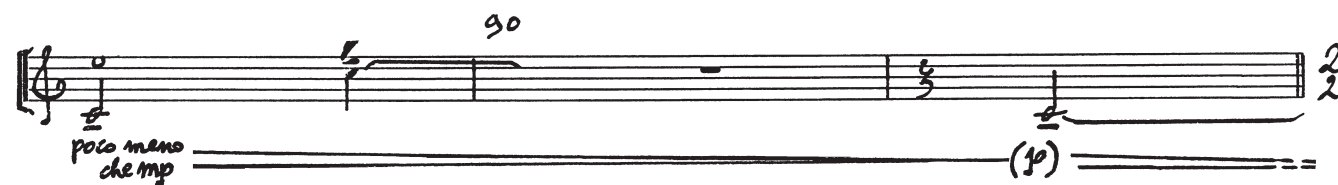
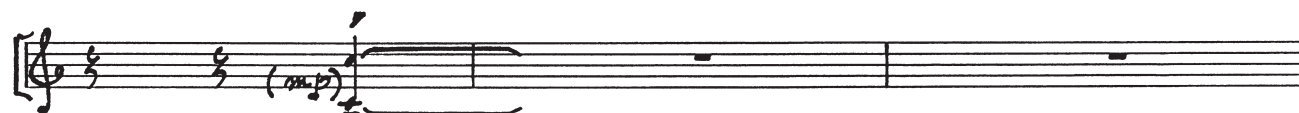
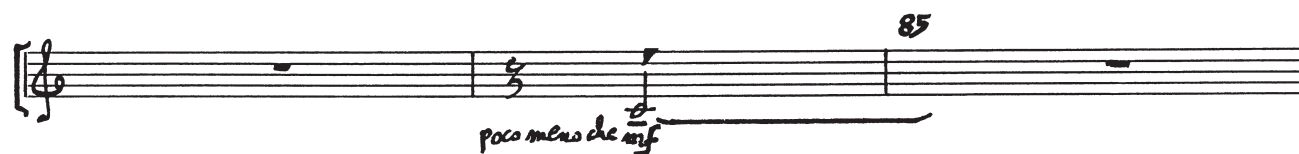
rit. (sensibilmente) - - - - - a tempo

rit. (molto e grad.) - - - - -

-(rit.)- a tempo

Andantissimo; con grande concitazione (d.)

mart. metallo



Adagio ma lievemente animato; inquieto (♩)

cel.

8 105

f (brutale; graffiante)

(Ped. sempre)

(f) p sempre, ma sensibile

110

rit. (sensib.) ----- *115* ----- *11 a tempo*

5 4 5 4

8 120

pp *p*

120 125

rit. (molto grad.) ----- *al*

poco

Tempo I

130

